

4 Activating and Reading the E-Coder)R900i

How to Activate LCD Using the Solar Panel

The E-Coder)R900i has a solar panel to power the LCD display. See Figure 4.

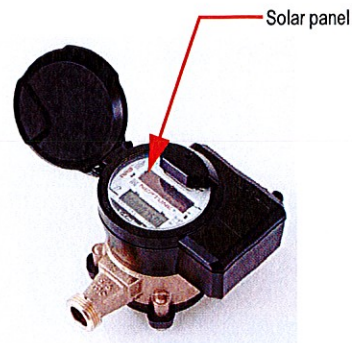


Figure 4 Solar Panel for E-Coder)R900i

The solar panel activates the LCD display when the unit is exposed to a light source. If the LCD does not reactivate as expected, try shining a flashlight on the light sensor. See Figure 5.

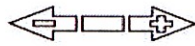


Figure 5 Activating E-Coder)R900i

How to Read

It is important to become familiar with the information available from the meter. To identify this information the following icons and displays are helpful.

Table 2 Icons and Displays



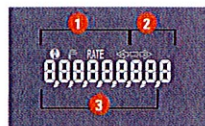
Flow/Leak Indicator shows the direction of flow through the meter:

ON	Water in use.
OFF	Water not in use.
Flashing	Water is running slowly/low flow indication.



Leak indicator displays a possible leak:

OFF	No leak indicated.
Flashing	Intermittent leak indicated. Water used during at least 50 of the 96 15-minute intervals during the previous 24-hour period.
Continuous ON	Continuous leak indicated. Water used during all 96 15-minute intervals during the previous 24-hour period.



Nine-digit LCD displays the meter reading in billing units of measure. The number is shown in odometer style, reading left to right.

- 1 First four digits – Typical billing digits.
- 2 Last three digits – Testing units used for meter testing
- 3 Fifth and sixth reading digits – Reading units

Common Causes of Leaks


If the leak indicator is flashing or continuously on, the E-Coder)R900i is indicating that a possible leak can exist. Leaks can result from various circumstances. To better help you identify a possible leak, the following table contains some common causes of leak problems.

Table 3 Possible Leaks

Possible Cause of Leak	Intermittent Leak	Continuous Leak
Outside faucet, garden or sprinkler system leaking	✓	✓
Toilet valve not sealed properly	✓	✓
Toilet running		✓
Faucet in kitchen or bathrooms leaking	✓	✓
Ice maker leaking		✓
Soaker hose in use		✓
Leak between the water meter and the house		✓
Washing machine leaking	✓	✓
Dishwasher leaking	✓	✓
Hot water heater leaking		✓
Watering yard for more than eight hours	✓	✓
Continuous pet feeder		✓
Water-cooled air conditioner or heat pump	✓	✓
Filling a swimming pool		✓
Any continuous use of water for 24 hours		✓

How to Tell if Water is in Use

To determine if water is in use, complete the following steps:

- 1 Check the  flow indicator by closely watching it for two minutes.
- 2 Determine the following conditions:
 - If the arrow is flashing, then water is running very slowly.
 - If the arrow is continuously ON, water is running.
 - If the arrow does not flash, water is not running.

What to Do if There is a Leak


The following checklist can be helpful if the E-Coder)R900i leak indicator shows a possible leak.

Table 4 Checklist for Leaks

- Check all faucets for possible leaks.
- Check all toilets and toilet valves.
- Check the ice maker and water dispenser.
- Check the yard and surrounding grounds for a wet spot or indication of a leaking pipe.

If Continuous Leak is Repaired

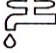
If a continuous leak is found and repaired, complete the following steps:

- 1 Use no water for at least 15 minutes.
- 2 Check the  leak icon.

If the leak indicator changes from continuous ON to flashing, then a continuous leak is no longer indicated.

If Intermittent Leak is Repaired

If an intermittent leak is found and repaired, complete the following steps:

- 1 Check the  leak icon after at least 24 hours.
- 2 If the leak has been correctly repaired, the leak icon changes from flashing to OFF.

Software

A software update is required for the N_SIGHT™ host software to interpret the enhanced data communicated feature from the Neptune E-Coder)R900i.